

SECONS SDI Diagnostics Interface Manual

SECONS SDI Diagnostics Interface Installation and Operation Manual

ver. 1.00

Table of Contents

Important installation notice.....	3
Safety precautions.....	3
Usage guidelines.....	3
SDI Interface drivers installation.....	4
Drivers removal.....	5
SDI Protocol and Vehicle Bus listing.....	6



Important installation notice

In order to get the SDI Interface working properly on your computer, you have to install drivers before plugging the SDI in.

When using the SDI, you should connect the device first to a vehicle before connecting it via USB to your computer.

Safety precautions

- Do not attempt to operate this software and drive the vehicle at the same time. Always have another person to use the software while the vehicle is being driven.
- Do not leave your vehicle unattended while running tests.
- To avoid possible personal injury and damage to the vehicle, please refer to the appropriate vehicle manufacturer's service procedures and safety instructions.
- Objects can be propelled by moving engine parts. These objects and high pressure fluids and liquids can cause serious injury. Always wear an approved eye protection.
- Ensure all sparks, lighted cigarettes, open flames, or any other device capable of producing a high temperature are not utilized near automotive batteries. Automotive batteries contain sulfuric acid and produce explosive gases.
- Ensure a safe distance from all moving engine components during servicing. Test equipment, clothing, and parts of your body can be seriously damaged or injured.
- An operating engine produces carbon monoxide which is an odorless, colorless, poisonous gas that can lead to serious injury or death. Always service an operating engine in a well ventilated area.

Usage guidelines

- Never run diagnostics software for different brand on your vehicle (e.g. running Ford diagnostic software on a Mercedes-Benz car). This may cause major damage to your SDI interface and such action voids your warranty..
- The SDI Interface is designed for 12-volts only vehicles.
- Although the SDI Interface contains protection circuits, please verify if the OBD2 connector is properly connected and no pins are short-circuited to battery before performing diagnosis.
- Never try to disassemble the SDI Interface. It does not contain any user serviceable parts. Removing SDI Interface cover voids your warranty.

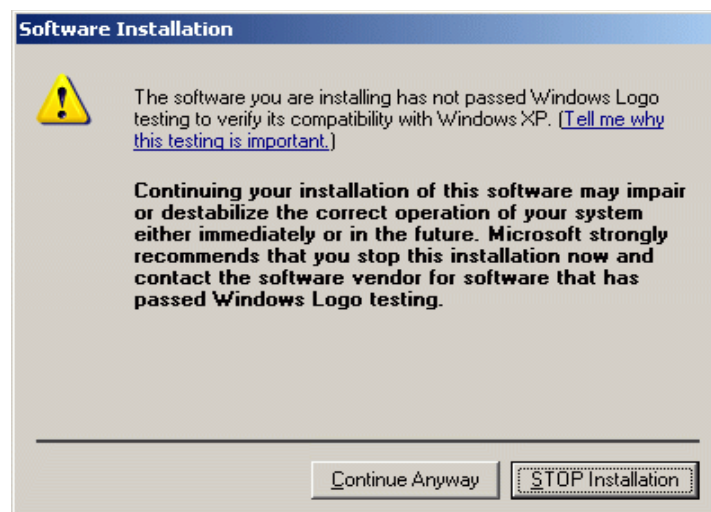
SDI Interface drivers installation

Drivers have to be installed before the SDI interface is first time plugged to your computer.

Launch dpinst.exe from the installation CD-ROM. The following screen should display:

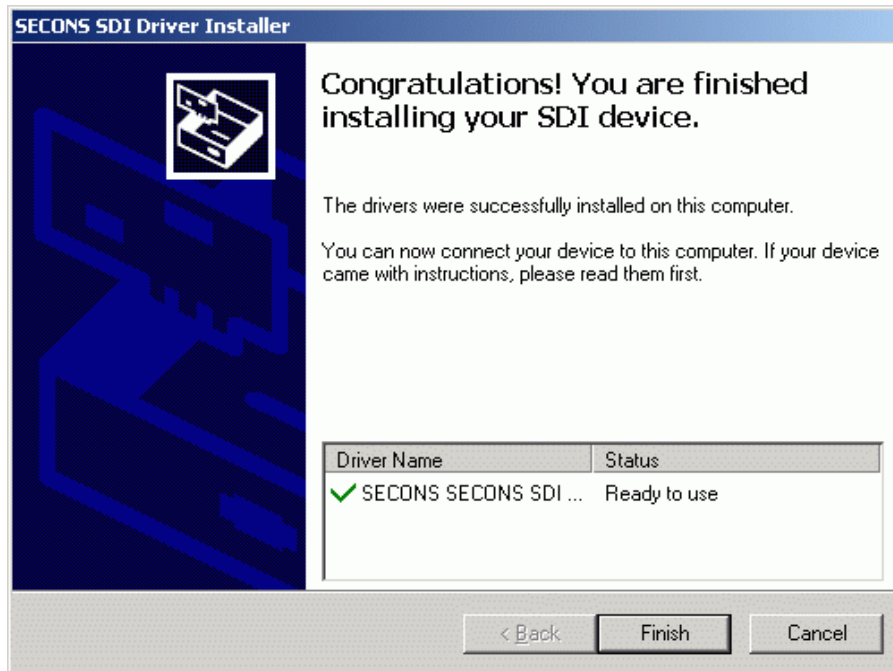


Click on **Next** button. Windows XP and later will display warning about driver's signature. Don't care about it, our drivers are fully tested to work on Windows 2000 and later.



Click on „**Continue Anyway**“.

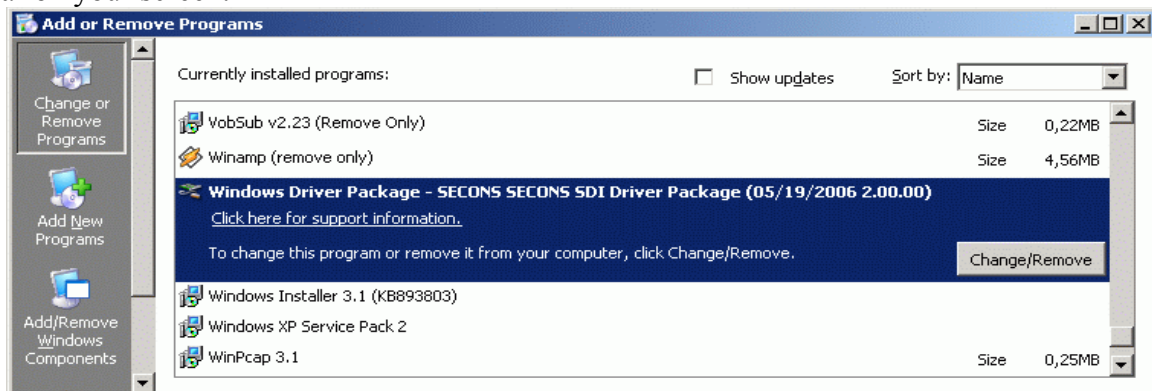
SECONS SDI Diagnostics Interface Manual



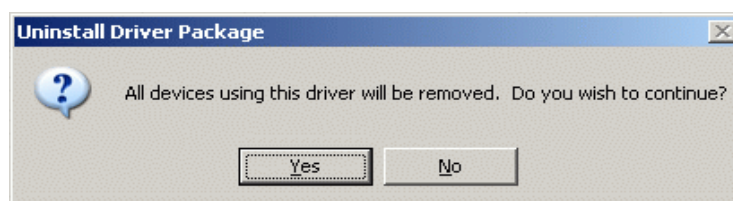
Now you have successfully installed SDI Drivers and you can plug-in the SDI interface to the computer and connect it with a vehicle.

Drivers removal

If you want to remove SDI drivers from your computer, click on „Start menu“, then choose „Settings, Control panels“ and then click on „Add or remove programs“. This window should appear on your screen:



Please select „Windows Driver Package – SECONS SDI Driver Package“ and click on „Change/Remove“. Then you will be asked if you really want to remove the drivers, click on „Yes“:



Now the drivers are uninstalled from your computer.

SDI Protocol and Vehicle Bus listing

The SDI Interface supports all major standards for vehicle diagnostics. These physical layers are supported:

- ◆ ISO9141
 - K-Line (28x)
 - L-Line
- ◆ CAN-BUS
 - High-Speed
 - Low-Speed (Fault-Tolerant)
 - Single-Wire
- ◆ J1850 bus
 - VPW (GM vehicles)
 - PWM (Ford vehicles)

Diagnostic protocol listing:

- ◆ KW71/KW1281
- ◆ KWP2000, PSA2000
- ◆ Renault ISO
- ◆ Peugeot ISO
- ◆ VW TP2.0
- ◆ ISO 15765
- ◆ OBD2 (ISO9141, ISO14230, ISO15765, VPW, PWM)
- ◆ Ford ISO protocol
- ◆ Opel KW82
- ◆ BMW DS-1, BMW DS-2
- ◆ KWP2000 STAR
- ◆ BMW FAST